

HARDLOCK[®]
Solution

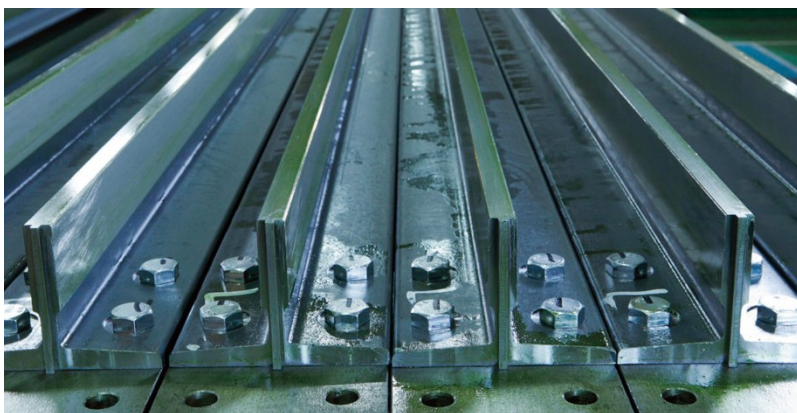
**Elevator
Applications**

HARDLOCK Nuts are used for fixing elevator car guide rails of Tokyo Skytree, where life durability of 100 years is required for structural parts. The past performances such as 0% failure of underfloor equipment mounting for Shinkansen; Japanese bullet train since 1992 were regarded as back up evidence for long term durability.

Products: HARDLOCK Nuts M16, M20, M24, M30 S45C Manganese Phosphate

Quantity: about 15,000pcs

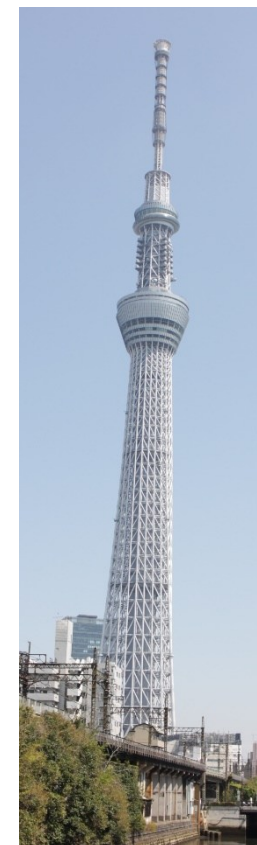
| Elevator | Capacity | Load | Rated Speed | Quantity | Travel |
|------------------------------|------------|---------|--------------------------------------|----------|--------|
| To the observation deck | 40 persons | 2,600kg | 600m/min | 4 | 350m |
| To the observation cloisters | 27persons | 1,800kg | 240m/min 540m/min (for emergency) | 2 | 464.4m |



Car guide rail



High speed elevator car



Tokyo Skytree

Located in: Tokyo Solamachi

Height: 634m

Opening: 22 May 2012

