

HARDLOCK[®]
Solution

Flange Joints
Applications

Use of HARDLOCK Nuts on Flange Joints

Flange of blower fan piping at Adataro Service Area in Tohoku Express Way

HARDLOCK Nut Basic M16x2.0 Thin Type SUS304



<Before>



The nuts completely loosened where a spring disc washer can not be installed because of insufficient length of the bolt.
(Even if a spring disc washer is seated, a nut loosens a half turn or more.)

<After>



Replaced with HARDLOCK Nut and no loosening is observed.
If a bolt length allows, it is also recommended to install HARDLOCK Nuts with a spring disc washer to prevent gasket creep and relaxation.



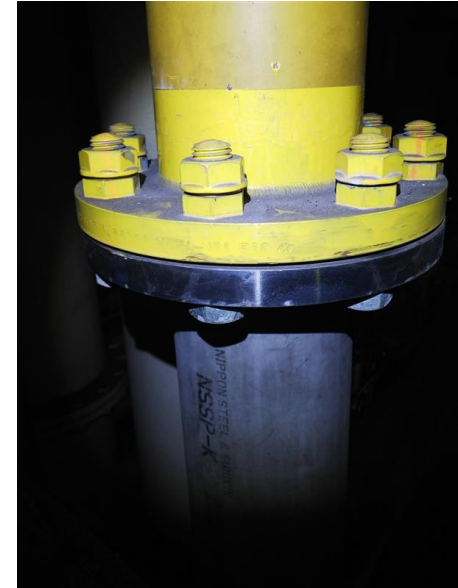
Use of HARDLOCK Nuts on Flange Joints

Various flanges in steel mills

Piping for water, oil, gas, nitrogen and steam

M16x2.0, M20x2.5, M22x2.5, M24x3.0

SS400 Trivalent Chromate

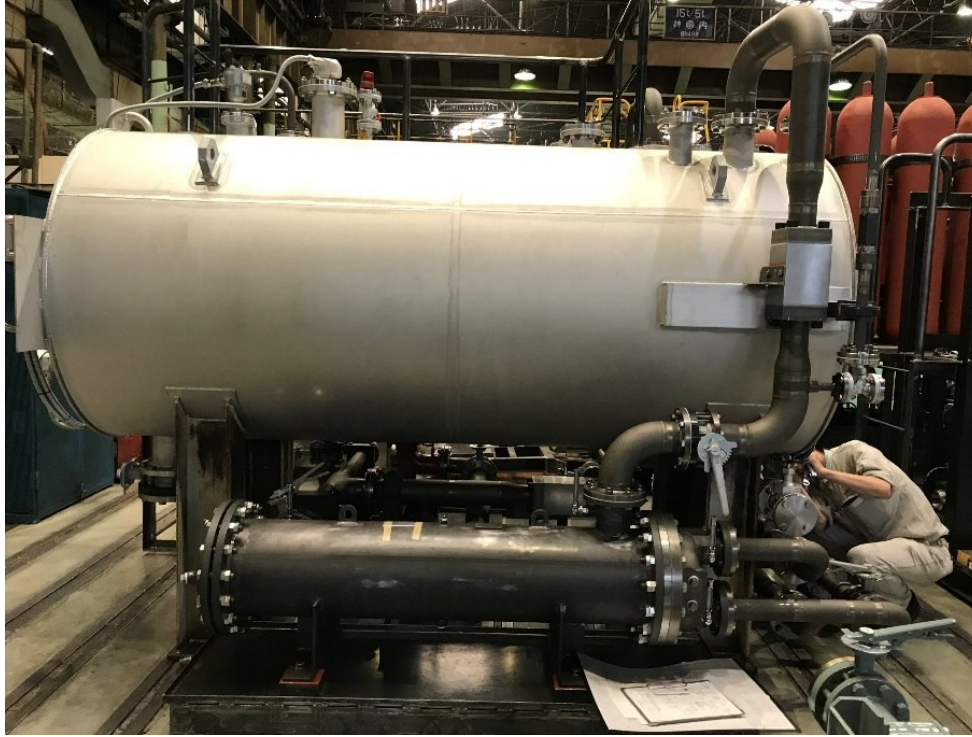


Safety is power!

HARDLOCK®

Use of HARDLOCK Nuts on Flange Joints

Flange for piping of hydraulic tank in steel mills



M24x3.0
SS400 Trivalent Chromate



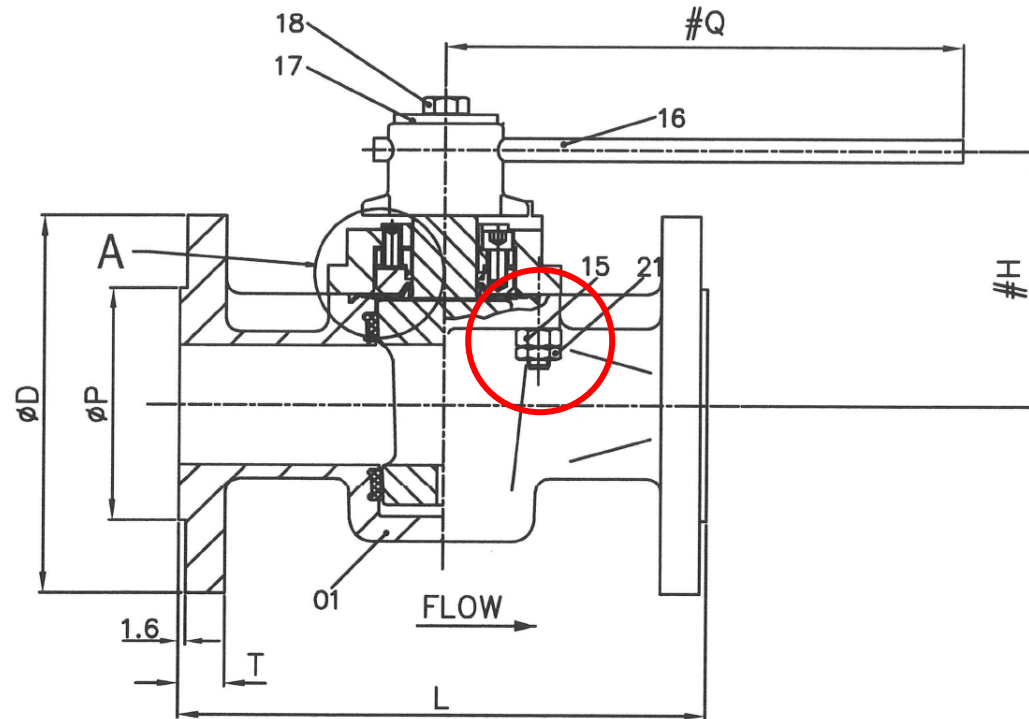
Safety is power!

HARDLOCK®

Use of HARDLOCK Nuts on Flange Joints

Joint of a valve and piping for a hydrogen fluoride tank

HARDLOCK Nut M8x1.5 A4-70 SUS316 (4pcs/valve)



The tank leaked hydrogen fluoride with vibration during transportation.



Safety is power!

HARDLOCK®